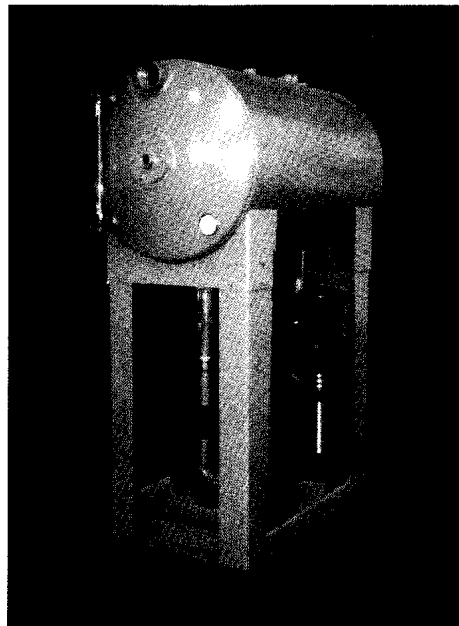
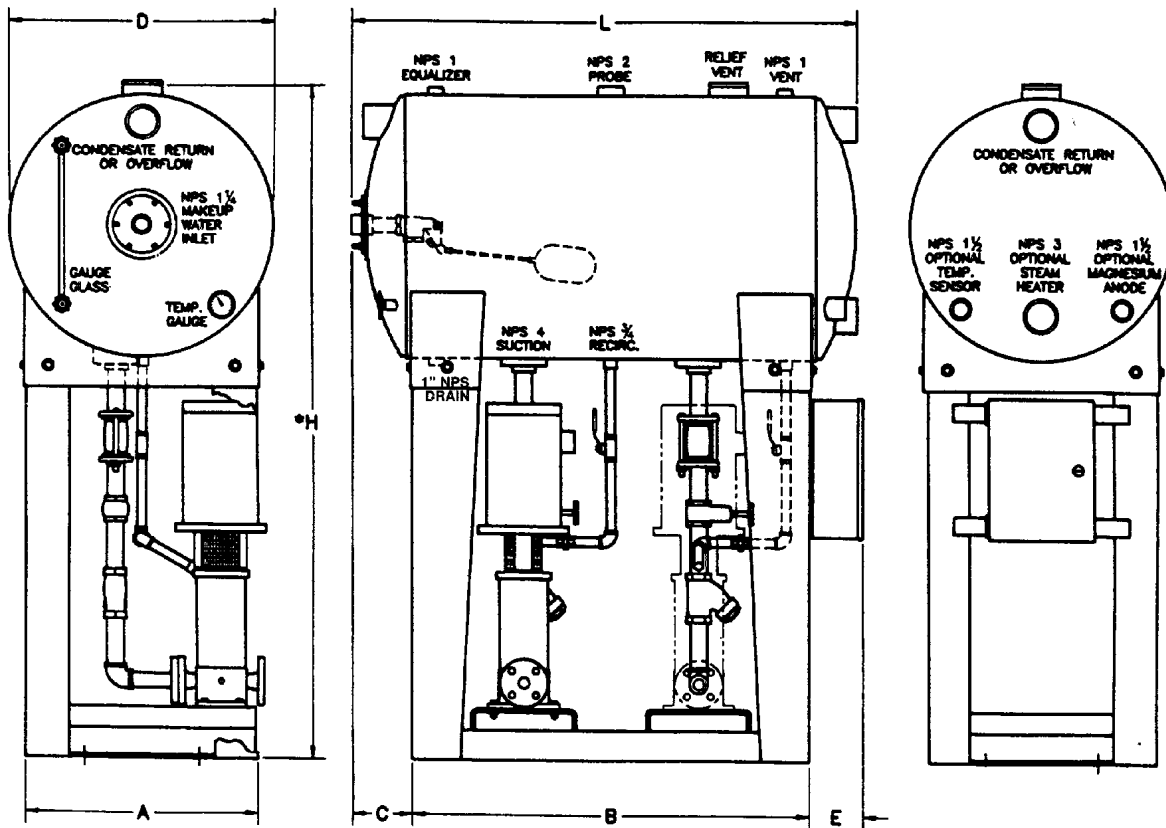


BOILER FEEDWATER SYSTEM

- Acts as a reservoir for condensate return and make-up water.
- Acts as a reservoir to store boiler feedwater.
- Option to pre-heat boiler feedwater.
- Horizontal, stand-mounted, atmospheric configuration.
- Dished head, factory pressure tested, non-code stamped vessel standard.
- ASME, Section VIII Code stamped vessels, lined or galvanized vessels available.
- Model Range: 43 gallon through 1,285 gallon.
- Water storage to full overflow: 15 minute standard.
- Complete system including: vessel, pump(s), stand, trim and control panel.
- Factory piped pump recirculation is standard.
- Can be custom configured to meet customer requirements.
- Factory insulation and jacketing available.
- Vessel unbolts from stand for ease of replacement.
- Oversize pump suction lines standard.
- Additional openings for future applications standard.
- Auxiliary relief vent(s).



BOILER FEEDWATER SYSTEM



TANK SIZE — GALLONS	43	85	160	300	400	550	810	1000
A — Base Width	16.0"	19.5"	26.5"	31.5"	36.5"	36.5"	42.0"	42.0"
B — Base Length	33.5"	45.5"	45.5"	57.5"	57.5"	81.5"	93.5"	117.5"
C — Base to Makeup Inlet	5.1"	5.7"	6.9"	8.2"	9.1"	9.1"	9.9"	9.9"
D — Outside Diameter	18.4"	22.4"	30.4"	36.4"	42.4"	42.4"	48.4"	48.4"
E — Base to Cabinet	6.3"	6.3"	6.3"	6.9"	6.9"	6.9"	6.9"	6.9"
H* — Standard Height	60.0"	70.0"	78.0"	90.0"	96.0"	96.0"	114.0"	114.0"
L — Tank Length	44.1"	56.7"	58.0"	72.6"	74.3"	98.3"	112.0"	136.0"
Size of Condensate Return	NPS 2	NPS 2	NPS 3	NPS 3	NPS 3	NPS 3	NPS 3	NPS 3
† Qty. of Suction Openings	2	2	2	3	3	3	3	3

*Height shown is standard for most applications. Features that may cause height to increase include: Boiler design pressure greater than 150 psi, TEFC motors, and 50-hertz power supply.

† Quantity shown is for standard tank. Extra openings are available when required.


Burnham®
 COMMERCIAL STEEL BOILERS
 Lancaster, PA 17604
 (717) 397-4700